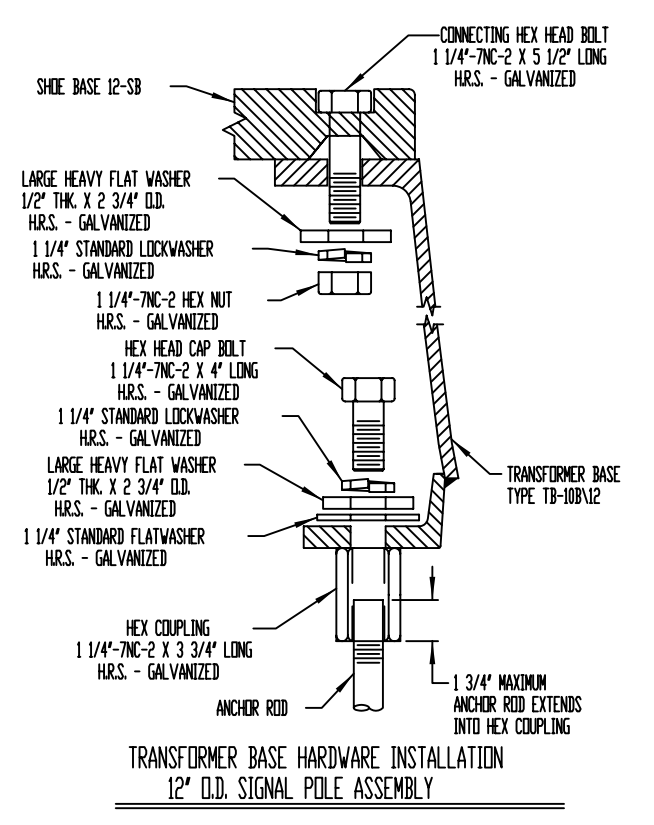
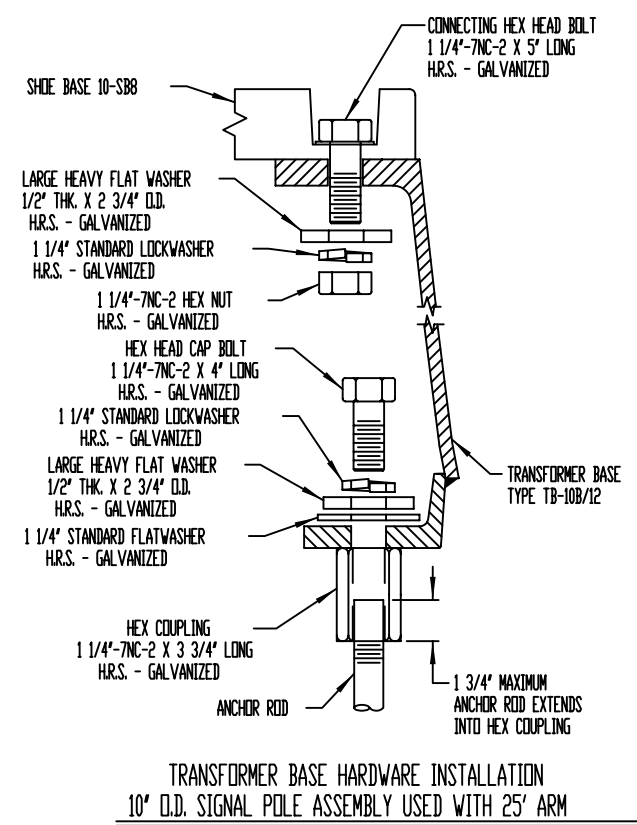
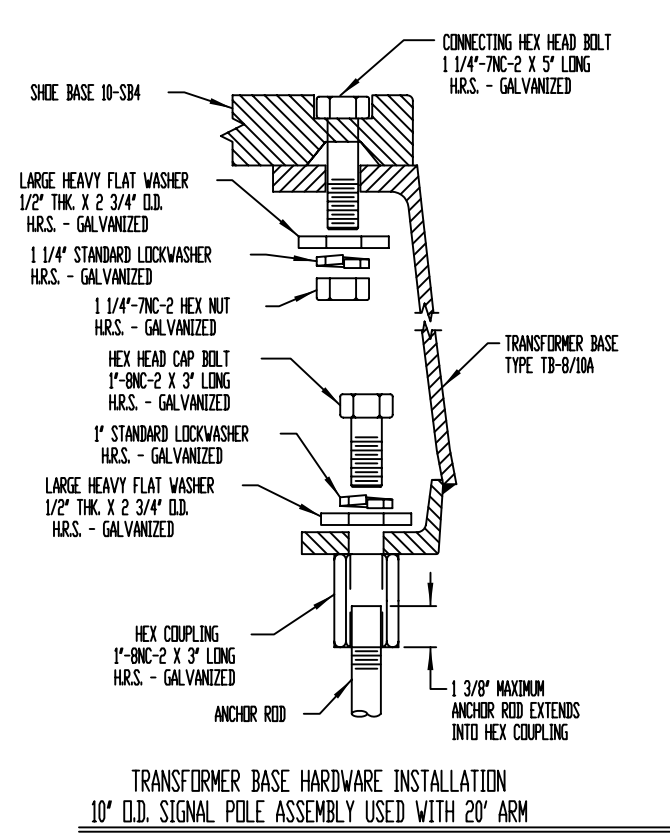
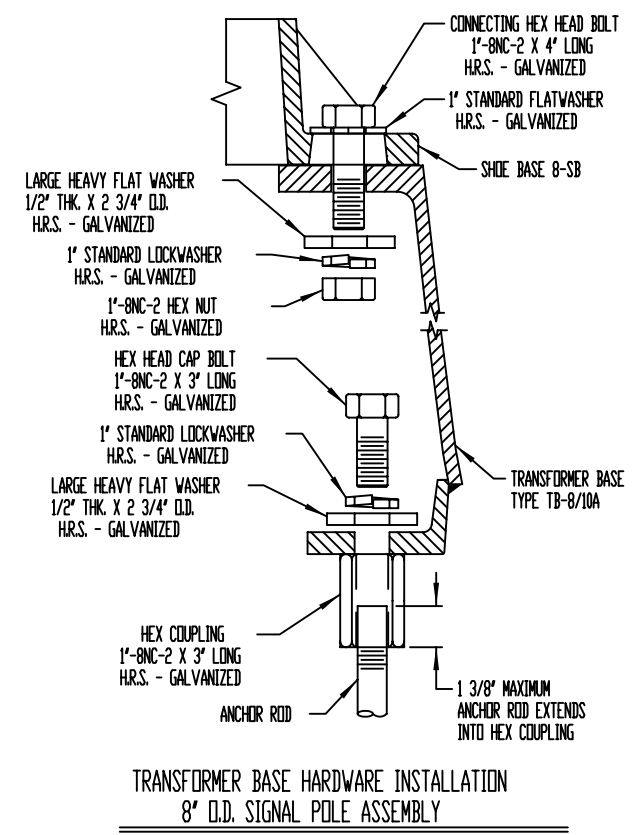
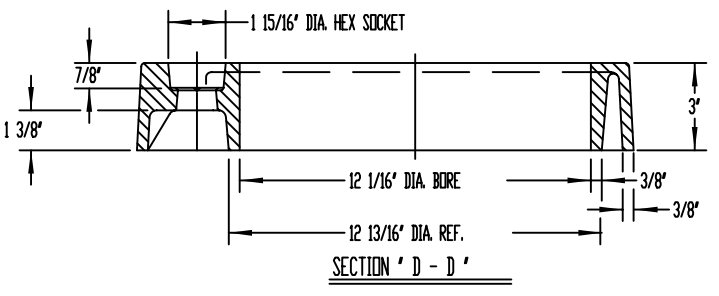
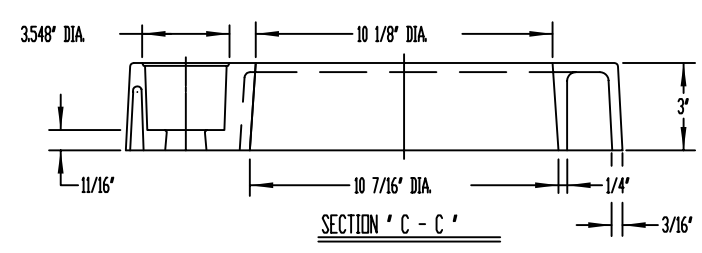
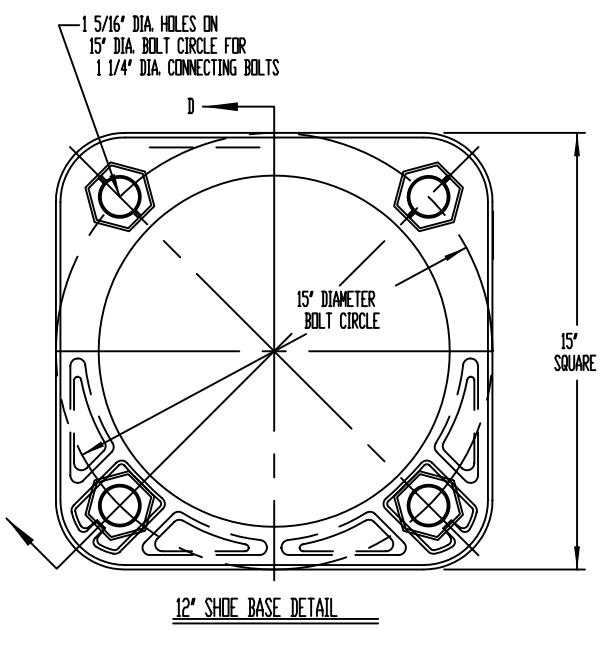
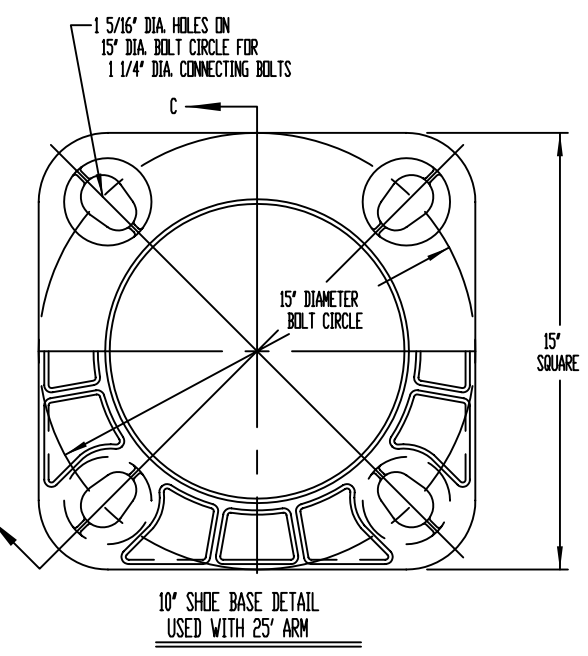
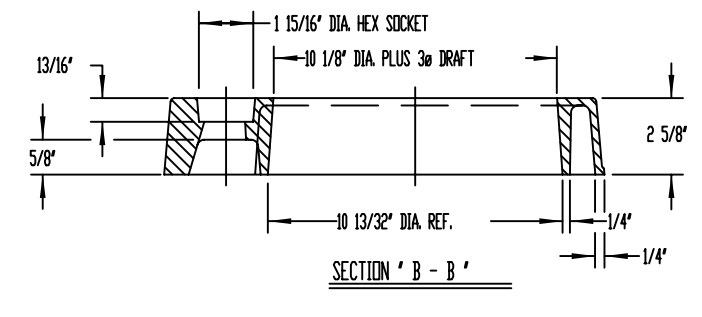
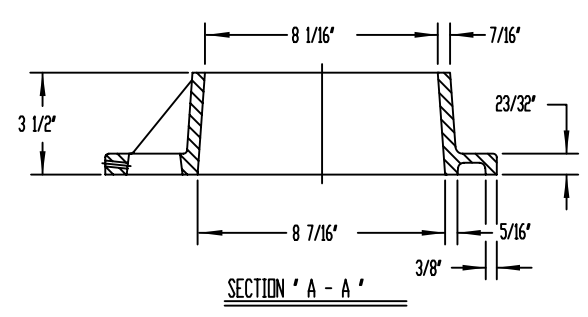
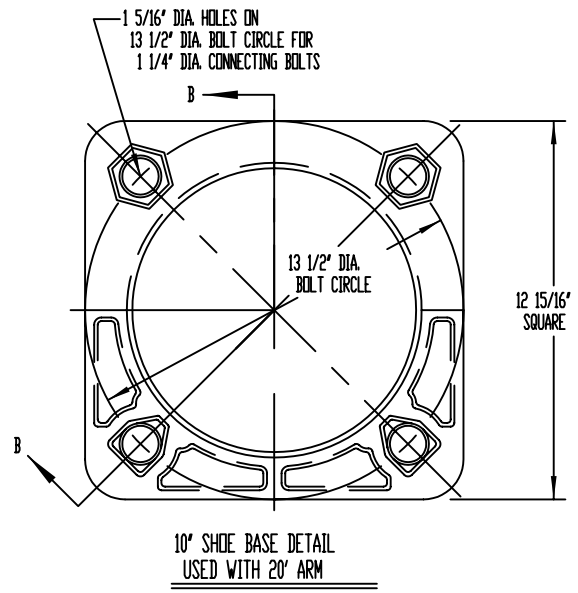
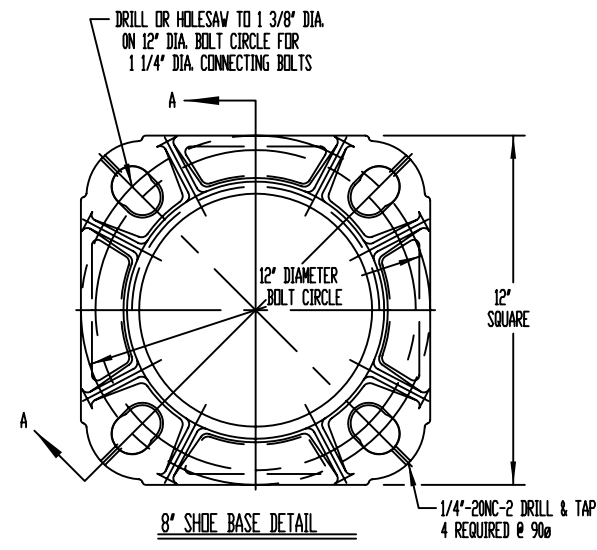


UNION COUNTY CODE NO.	ARM LENGTH	ARM SIZE 'D1' X 'W' WALL	ARM TAPER 'D1' X 'D2'	TOP CROSS-SECTION 'E1' X 'E2'	SHAFT SIZE		SHAFT TAPER		BASE WELD SIZES	
					'S1' X 'X' T' WALL	'S1' X 'X' S2' X 'S1'	'W1'	'W2'		
UC-SMA15-TB	15' - 0"	6 5/8" X .156 WALL	6 5/8" X 3"	9 1/2" X 5 7/8"	8" X .250 WALL	8" X 5 7/8" X 8"	5/16"	1/4"		
UC-SMA20-TB	20' - 0"	8" X .156 WALL	8" X 4"	11" X 8"	10" X .188 WALL	10 X 8" X 10"	1/4"	3/16"		
UC-SMA25-TB	25' - 0"	8" X .188 WALL	8" X 4"	11" X 8"	10" X .250 WALL	10" X 8" X 10"	5/16"	1/4"		
UC-SMA30-TB	30' - 0"	10" X .156 WALL	10" X 5"	14 5/8" X 9"	12" X .250 WALL	12" X 9" X 12"	5/16"	1/4"		
UC-SMA35-TB	35' - 0"	10" X .188 WALL	10" X 5"	14 5/8" X 9"	12" X .250 WALL	12" X 9" X 12"	5/16"	1/4"		

FLAGPOLES, INC. 95 GNARLED HOLLOW RD. EAST SETAUKET, N.Y. 11733

PROJECT:	DIST:							
CONTRACTOR:	AGENT:							
UNION COUNTY SINGLE MEMBER TRAFFIC STANDARDS								
NO.	DATE	BY	DRAWN BY	S.A.F.	DATE	1/27/04	MATERIAL	AS NOTED
1			CHK'D	J.S.	APP'D		DRAWING NO.	7257
2			SCALE	NONE	WORK ORDER #		SHEET 1 OF 3	

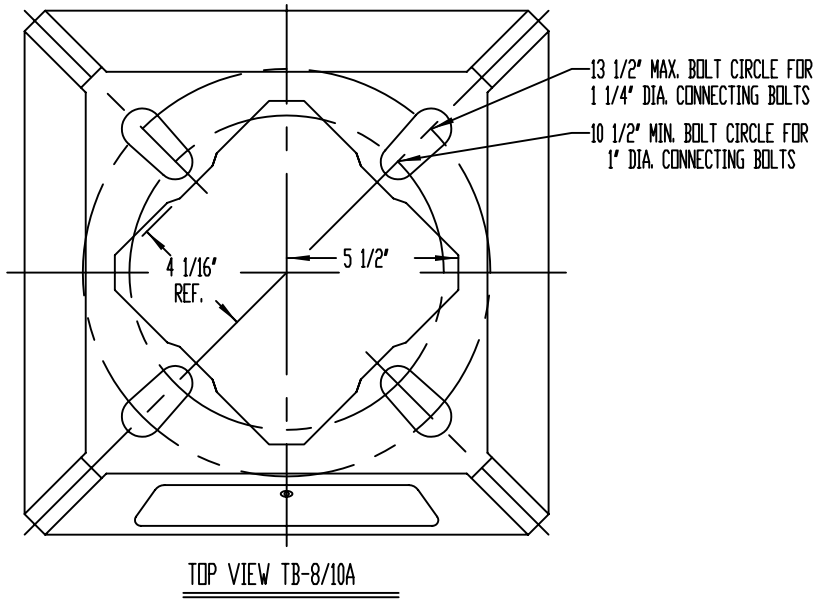


FINISH: MEDIUM BRONZE POWDER COAT

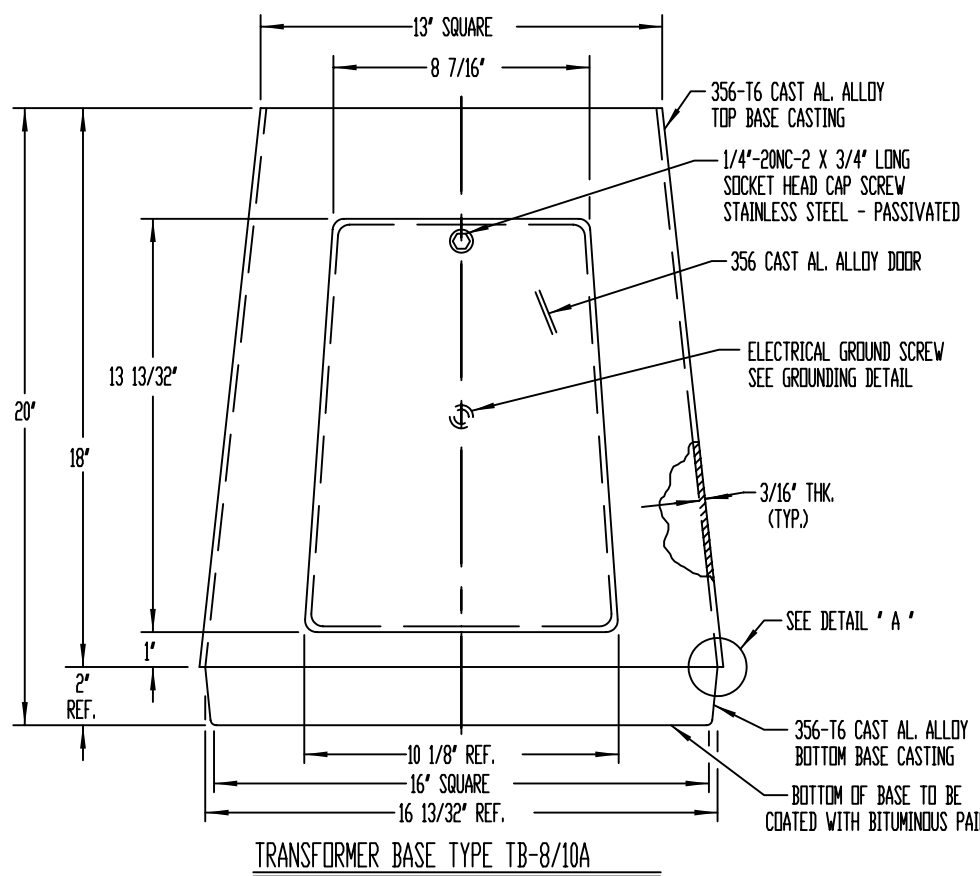
UNION COUNTY SINGLE MEMBER TRAFFIC STANDARDS

FLAGPOLES, INC. 95 GRANLED HOLLOW RD., EAST SETAUKET, N.Y. 11735

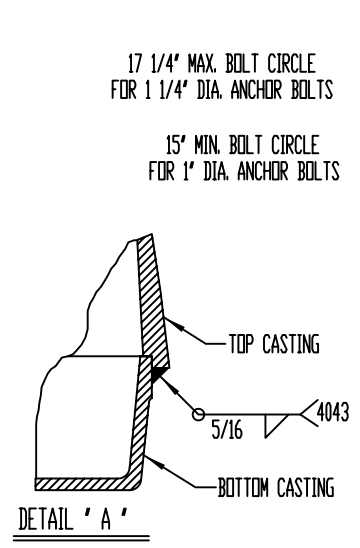
PROJECT:		DIST:	
CONTRACTOR:		AGENT:	
NO.	DATE	BY	DATE
1		SAF.	1/27/04
2		J.S.	
SCALE: NONE		WORK ORDER #	
DRAWING NO. 7258			AS NOTED
SHEET 2 OF 3			



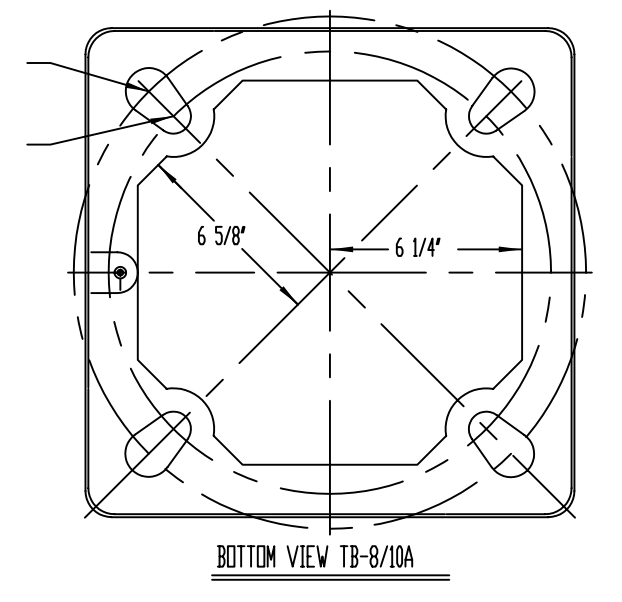
TOP VIEW TB-8/10A



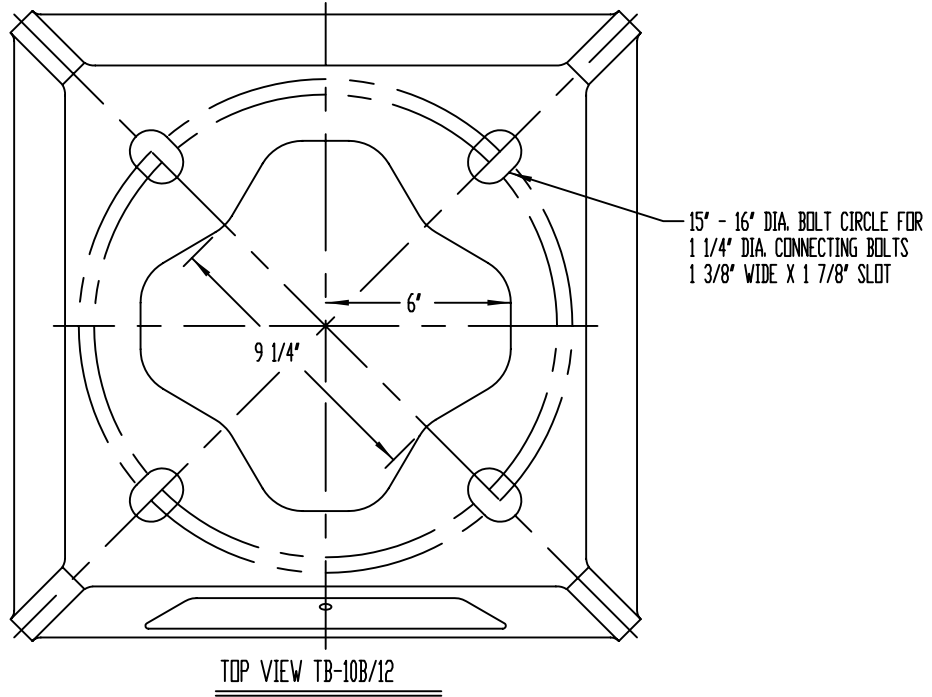
TRANSFORMER BASE TYPE TB-8/10A



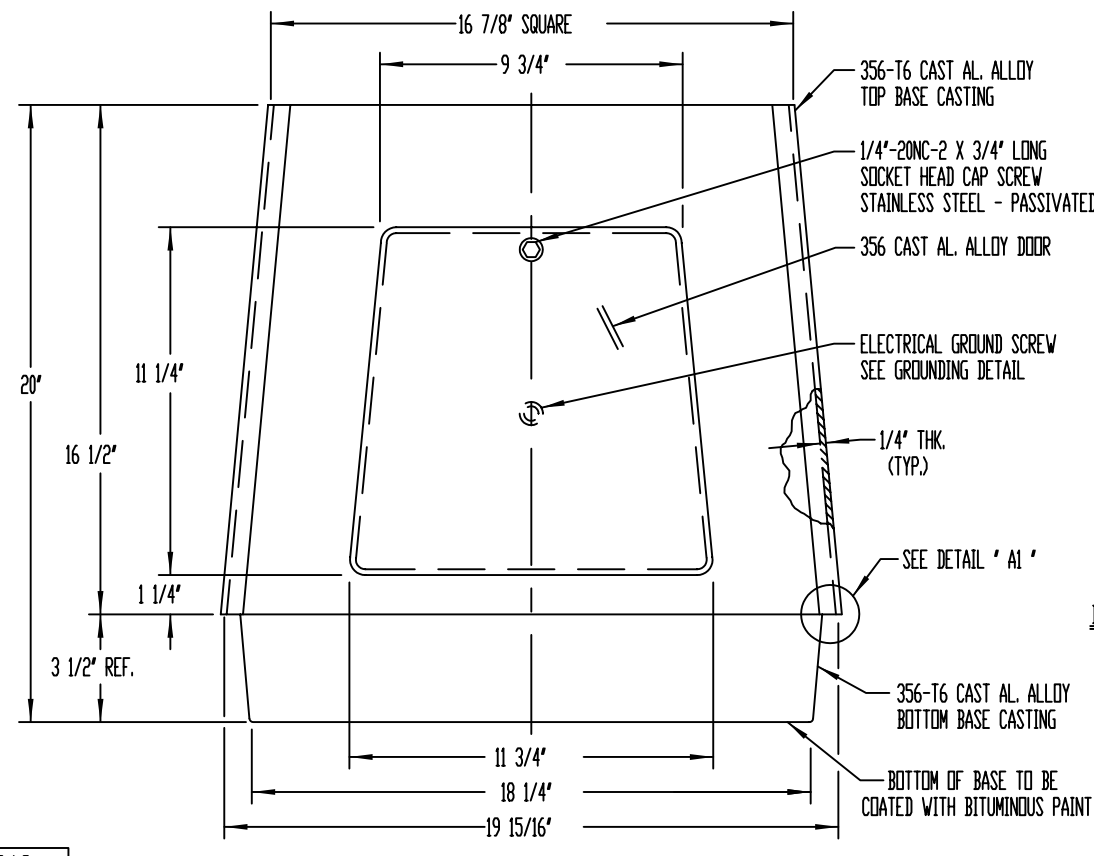
DETAIL 'A'



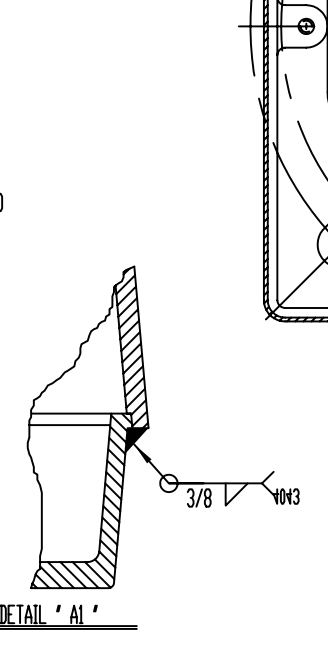
BOTTOM VIEW TB-8/10A



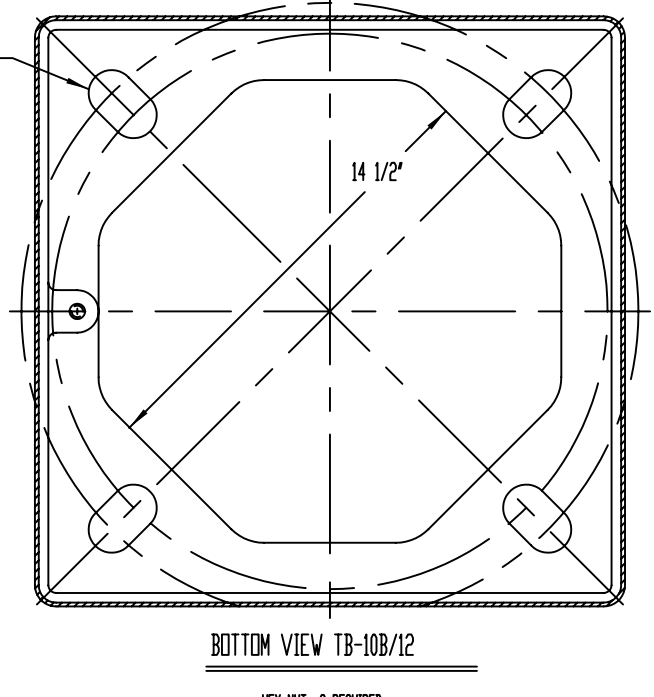
TOP VIEW TB-10B/12



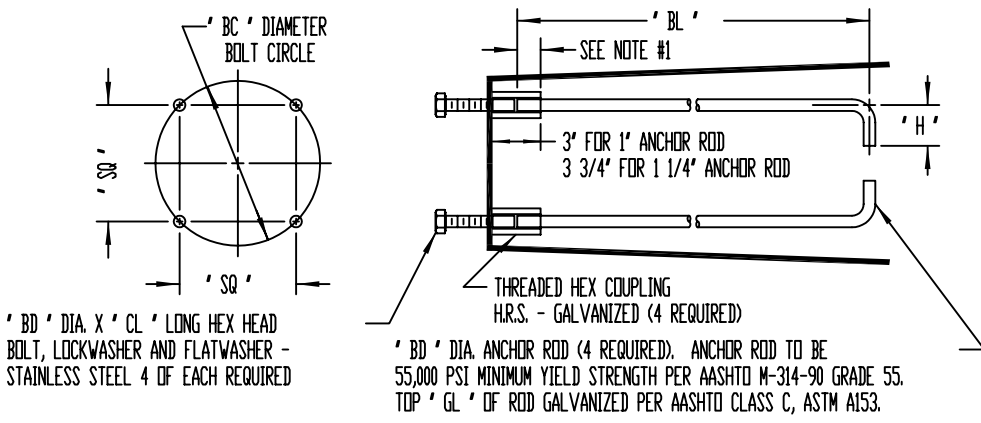
TRANSFORMER BASE TYPE TB-10B/12



DETAIL 'A1'



BOTTOM VIEW TB-10B/12



'BD' DIA. X 'CL' LONG HEX HEAD BOLT, LOCKWASHER AND FLATWASHER - STAINLESS STEEL 4 OF EACH REQUIRED

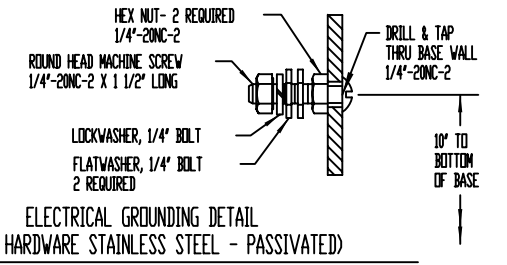
'BL' - SEE NOTE #1

3" FOR 1" ANCHOR ROD
3 3/4" FOR 1 1/4" ANCHOR ROD

THREADED HEX COUPLING H.R.S. - GALVANIZED (4 REQUIRED)

'BD' DIA. ANCHOR ROD (4 REQUIRED). ANCHOR ROD TO BE 55,000 PSI MINIMUM YIELD STRENGTH PER AASHTO M-314-90 GRADE 55. TOP 'GL' OF ROD GALVANIZED PER AASHTO CLASS C, ASTM A153.

NOTE:
1. - 1" DIAMETER ANCHOR ROD TO EXTEND 1 3/8" INTO HEX COUPLING.
1 1/4" DIAMETER ANCHOR ROD TO EXTEND 1 3/4" INTO HEX COUPLING.
2. - TRANSFORMER BASES TO HAVE MEDIUM BRONZE POLYESTER POWDER COAT FINISH.



ELECTRICAL GROUNDING DETAIL (ALL HARDWARE STAINLESS STEEL - PASSIVATED)

SHAFT O.D.	BOLT DIA. 'BD'	LENGTH 'BL'	HOOK 'H'	GALV. LG. 'GL'	BOLT CIRCLE 'BC'	BOLT SQ. 'SQ'	BOLT LG. 'CL'
8"	1"	36"	4"	12"	16"	11 5/16"	3"
10" (20' ARM)	1"	36"	4"	12"	16"	11 5/16"	3"
10" (25' ARM)	1 1/4"	48"	6"	18"	20"	14 1/8"	4"
12"	1 1/4"	48"	6"	18"	20"	14 1/8"	4"

FINISH: MEDIUM BRONZE POWDER COAT

UNION COUNTY SINGLE MEMBER TRAFFIC STANDARDS

REVISIONS		NO.	DATE	BY	DRAWN BY	SAF.	DATE	1/27/04	MATERIAL	AS NOTED
1					CHK'D	J.S.	APP'D		DRAWING NO.	7259
2					SCALE	NONE	WORK ORDER #			SHEET 3 OF 3

FLAGPOLES, INC. 95 GNARLED HOLLOW RD., EAST SETAUKET, N.Y. 11735

PROJECT: _____ DIST: _____
CONTRACTOR: _____ AGENT: _____